



**AL MUNASIB**  
**BUILDING MATERIALS TRADING LLC**  
INSPIRING LIVES THROUGH GREAT BRANDS



# PRODUCTS CATALOGUE

2 Decades  
**15**  
CELEBRATING  
YEARS  
OF EXCELLENCE



**AL MUNASIB  
BUILDING MATERIALS  
TRADING LLC**



# COMPANY INTRODUCTION

demand for new state of the art building infrastructure in the Middle East & GCC countries, inspired to start a company for distribution and services of the building materials products. Decade plus of practical experience in the products and technology understanding our principle/OEM have won us year on year award for not only for the business performance, but customer services also.

We're a Trading and Distribution Company established in the year 2004 based in UAE for the distribution of building materials. Started by highly experienced technocrats, who have worked for many years in same field before starting this venture in the Middle East Region.

The growth in the economics of the region and



**We're covering,**

**UAE • Saudi Arabia • Qatar • Oman • Kuwait • Bahrain • India**

## Our Brands

We've the world's industry leading & trusted brands.



# Warehouse

Most of the products in stock!

With a storage capacity of over 5,000 stock pallets and dedicated staff, we are able to maintain most of the items in stock complying with the highest standards using semi-automated warehouse control systems.



# Why Choose Us

Regional leadership in providing cost-effective, value-added solutions for water industry.

Efficient and innovative solutions for all types of valve control applications.

Every product we supply is thoroughly tested and certified to ensure top performance and unparalleled reliability.

The level of customer service that distinguishes us from our competitors has always been a benchmark.

# After Sales Service

We're committed to providing a comprehensive after-sales support service

## OUR STRENGTHS

- Attending complaints on time
- Factory trained technicians
- Maintenance specialists
- Complaint traceability with unique service reference
- 100% Complaints solved

## SERVICES OFFERED

- Control valve commissioning/servicing
- Annual maintenance contract
- Drawing/ Planning/ Assembly
- Technical on-site support
- Sizing Support





# Valve Products

## BALL VALVES

Material: Brass/ Bronze  
Carbon Steel/ Stainless Steel  
Size: 1/2" to 2"



## CHECK VALVES

Material: Brass/ Bronze  
Carbon Steel/ Stainless Steel  
Size: 1/2" to 2"



## BUTTERFLY VALVES

Material: CI/ DI/ CS/ SS  
Size: 2" to 36"



Material:  
CI/ DI/ CS/ SS  
Size: 2" to 36"

## STRAINERS

Material:  
Brass/ Bronze/ CI/ CS/ SS  
Size: 1/2" to 2"



Material:  
CI/ DI/ CS/ SS  
Size: 2" to 36"



## GLOBE VALVES

Material:  
Brass/ Bronze  
Size: 1/2" to 2"



## GATE VALVES

Material:  
Brass/ Bronze/ CS/ SS  
Size: 1/2" to 2"



Material:  
CI/ DI/ CS/ SS  
Size: 2 1/2" to 48"



Material:  
Ductile Iron  
Size: 2 1/2" to 12"



## DIRECT ACTING PRESSURE REDUCING VALVES

Size: 1/2" to 2"



## SOLENOID VALVE

Size: 1/2" to 2"



## PRESSURE REDUCING VALVE

Size: 2 1/2" to 24"



## PRESSURE RELIEF/SUSTAINING VALVE

Size: 2 1/2" to 24"

## ALTITUDE CONTROL VALVE

Size: 2 1/2" to 24"



## FLOAT CONTROL VALVE

Size: 2 1/2" to 24"



## SOLENOID CONTROL VALVE

Size: 2 1/2" to 24"



## CHECK CONTROL VALVE

Size: 2 1/2" to 24"

# Plumbing Specialties

## DIELECTRIC UNION



Type:  
Female to Female  
Male to Female  
Female to Brazing  
Male to Male  
Male to Brazing  
Size: 1/2" to 2"



## CONCEALED VALVE

Material:  
Brass/ Bronze  
Size: 1/2" to 2"

## BIB TAP - HOSE UNION / LOCKSHIELD / DOUBLE CHECK



Material: DZR Brass  
Size: 1/2", 3/4"



## HOSE BIB W/ VACUUM BREAKER

Material: DZR Brass CP  
Size: 1/2"



## ANGLE VALVE

Material: Brass Chrome Plated  
Size: 1/2"x1/2", 1/2"x3/8"



## FLEXIBLE BRAIDED FAUCET CONNECTORS

Material: EPDM SS Braided  
Size: 1/2" to 2"

## AUTOMATIC AIRVENT



Material: DZR Brass  
Size: 1/2" to 1"



Material: Bronze  
Size: 1/2" to 1"



Material: Cast/Ductile Iron  
Size: 1/2" to 16"



## WATER HAMMER ARRESTORS



Material: Stainless Steel/ Copper | Size: 1/2" to 2" | Male threaded



## DRAIN COCK

Material: Brass  
Size: 1/2" to 3/4"

## HOSE UNION BIB TAP



Material:  
Chrome Plated  
Size: 1/2"x 3/4", 3/4"x 3/4"



## DOUBLE SPHERE SCREWED / FLANGED RUBBER EXPANSION JOINT

Material:  
EPDM / Steel Galvanized  
Size: 1/2" to 2"



Size: 2 1/2" to 16"

## VACUUM BREAKER



Size: 1/2" to 2"



Size: 1/2", 3/4"

Material: Brass



## PIPE CLAMP

Material: DZR Brass  
Size: 1/2" to 16"



## LOCKABLE BALL VALVE

Material: DZR Brass  
Size: 1/2" to 2"

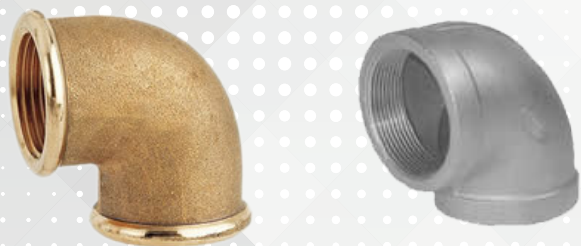


## THERMOSTATIC MIXING VALVE

Material: Brass Chrome Plated  
Size: 1/2" to 1"

# Fitting Products

## 90° FEMALE ELBOW



Material: Brass/ Stainless Steel | Size: 1/8" to 4"



## FEMALE HOSE CONNECTION

Size: 1/2" to 4"  
Material: DZR Brass CP



## MALE EXTENSION

## MALE FEMALE CONNECTOR

Material: Brass  
Size: 1/2" to 3"

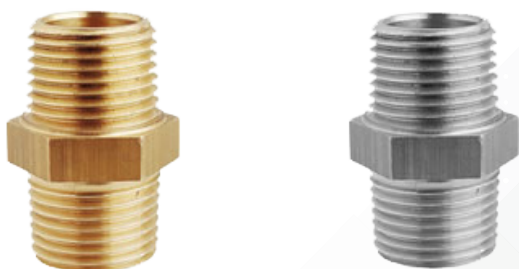


## FEMALE TEE



Material: Brass/ Stainless Steel | Size: 1/8" to 6"

## MALE NIPPLE



Material: Brass/ Stainless Steel | Size: 1/8" to 6"

## MALE FEMALE REDUCER

## MALE REDUCING NIPPLE CONNECTOR

Size: 1/4" to 4"  
Material: DZR Brass CP



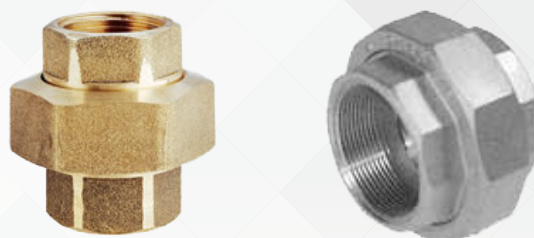
## FEMALE COUPLING

Material: Stainless Steel  
Size: 1/8" to 4"



## MALE STOPPER

## FEMALE FLAT SEAT UNION



Material: Brass/ Stainless Steel | Size: 1/8" to 4"





## PRESSURE GAUGE

Material:

Plastic/ Brass/ SS

Connection Size: 1/4" and 1/2"

Dial: 2 1/2", 3", 4"



## T & P GAUGE

Material:

Plastic/ Brass/ SS

Connection Size: 1/4" and 1/2"

Dial: 2 1/2", 3", 4"



## THERMOMETER

Material:

Aluminum/ Brass

Connection Size: 1/2"

Dial: 4 1/2", 6", 8"



## ANGLE THERMOMETER

Material:

Stainless Steel

Connection Size: 1/4" and 1/2"

Dial: 2 1/2", 3", 4"



## THERMOWELL

Material:

Brass/ SS

Connection Size: 1/4" to 3/4"



## GAUGE HOLDER

Material:

Brass/ SS

Connection Size:

1/4", 3/8", 1/2"



## SYPHONS

Material:

Copper/ Steel/ SS

Connection Size: 1/4", 3/8", 1/2"



## SNUBBER

Material:

Brass/ SS

Connection Size: 1/4", 1/2"



## TEST POINTS

Material:

Brass

Connection Size: 1/4", 1/2"

# Switches & Accessories



**FLOAT SWITCH**



**SOLENOID COIL**



**PRESSURE SWITCH**



**LIMIT SWITCHES**



**FLOW SWITCH**



**EPDM O-RINGS**



**EPDM RUBBER GASKET**



**STAINLESS STEEL SPRINGS**



**LEVEL SWITCH**



**TANK LEVEL INDICATOR**



**PNEUMATIC/ ELECTRIC ACTUATOR**



**ADJUSTABLE TEMPERATURE SWITCH**

# Drainage Products



**FLOOR DRAIN W/  
ROUND & SQUARE  
STRAINER**

Material:  
CI/ NB/ SS



**FLOOR DRAIN WITH  
ROUND FUNNEL**

Material:  
CI/ NB/ SS



**AREA DRAIN 8"x8",  
12"x12", 15"x15"**

Material:  
CI/ NB/ SS



**AREA DRAIN W/ TRAP**

Material:  
CI/ NB/ SS



**PLANTING AREA DRAIN**

Material:  
CI/ NB/ SS



**SANITARY FLOOR SINK**

Material:  
CI/ NB/ SS



**ROOF DRAIN**

Material:  
CI/ NB/ SS/ ALUMINUM



**SCUPPER DRAIN**

Material:  
CI/ NB/ SS/ ALUMINUM



**WALL CLEAN OUT**

Material:  
CI/ NB/ SS/ ALUMINUM



# Drainage Specialties



**FLOOR DRAIN**

Material: Stainless Steel



**FLOOR DRAIN  
HINGED TYPE**

Material: Stainless Steel



**HINGED AIRTIGHT  
CLEANOUT**

Material: Stainless Steel



**FLOOR DRAIN  
3 PC DESIGN**

Material: SS/ Brass



**CLEANOUT 2PC  
DESIGN**

Material: SS/ Brass



**SHOWER /  
BALCONY DRAIN**

Material: SS/ Brass



**LINEAR/SHOWER  
DRAIN**

Material: Stainless Steel



**CHANNEL DRAIN**

Material: DI/ PE



**TRENCH GRATE**

Material: DI



**SPOUT**

Material: SS/ NB



**VENT COWL**

Material: DI/ SS/ PVC



**GREASE/ OIL  
INTERCEPTOR**

Material: PVC/ HDPE



**OIL  
INTERCEPTOR**

Material: SS



**GREASE/ LINT  
INTERCEPTOR**

Material: SS/ MS

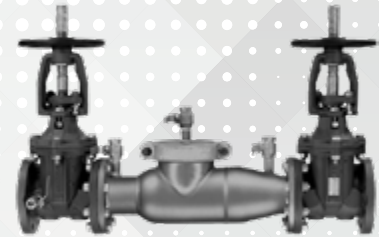
## BACKFLOW PREVENTOR



Material: Bronze



Material: Cast Iron



Material: Stainless Steel

## Air Separator



## Water Conservation

### FLOAT VALVE



Size: 2½" TO 6"  
Material: Bronze

Size: 3/8" TO 2"  
Material: Bronze

### PENSTOCK

Material: DI/ SS  
Size: 200x200 to 2000x2000



### FLOAT VALVE W/ BALANCED SINGLE SEAT

Material: CI/ DI



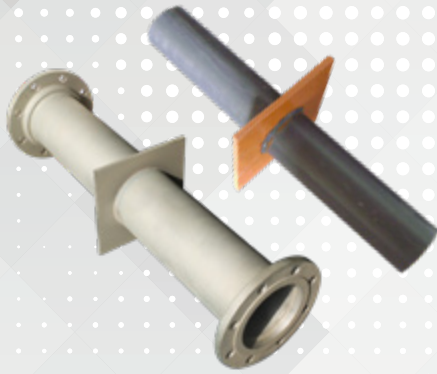
### FLAP VALVES

Material: CI/ DI



# Plumbing Accessories

---



**PUDDLE FLANGE**



**DIELECTRIC FLANGE  
PIPE FITTINGS**



**BIMETALIC  
FLANGES**

# Flow Specialties

---



**TRIPPLE DUTY  
VALVE**



**PINCH VALVE**



**SUCTION DIFFUSER**



**BUTTERFLY VALVE  
W/ ELECTRIC  
ACTUATOR**



**BUTTERFLY VALVE  
W/ PNEUMATIC  
ACTUATOR**



**BALANCING VALVE**



# PEX Pipes & Connectors



1. CORE PIPE FITTINGS
2. RADIANT FITTINGS
3. TRANSITION FITTINGS
4. FLEX HOSES
5. PEX BARB CORE FITTINGS
6. POTABLE WATER PEX PIPES

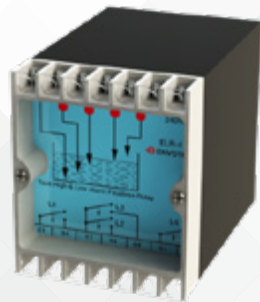
## Electrical Controller's



**CONTROLLERS**



**LEVEL SENSING  
ELECTRODES**



**LEVEL RELAYS**



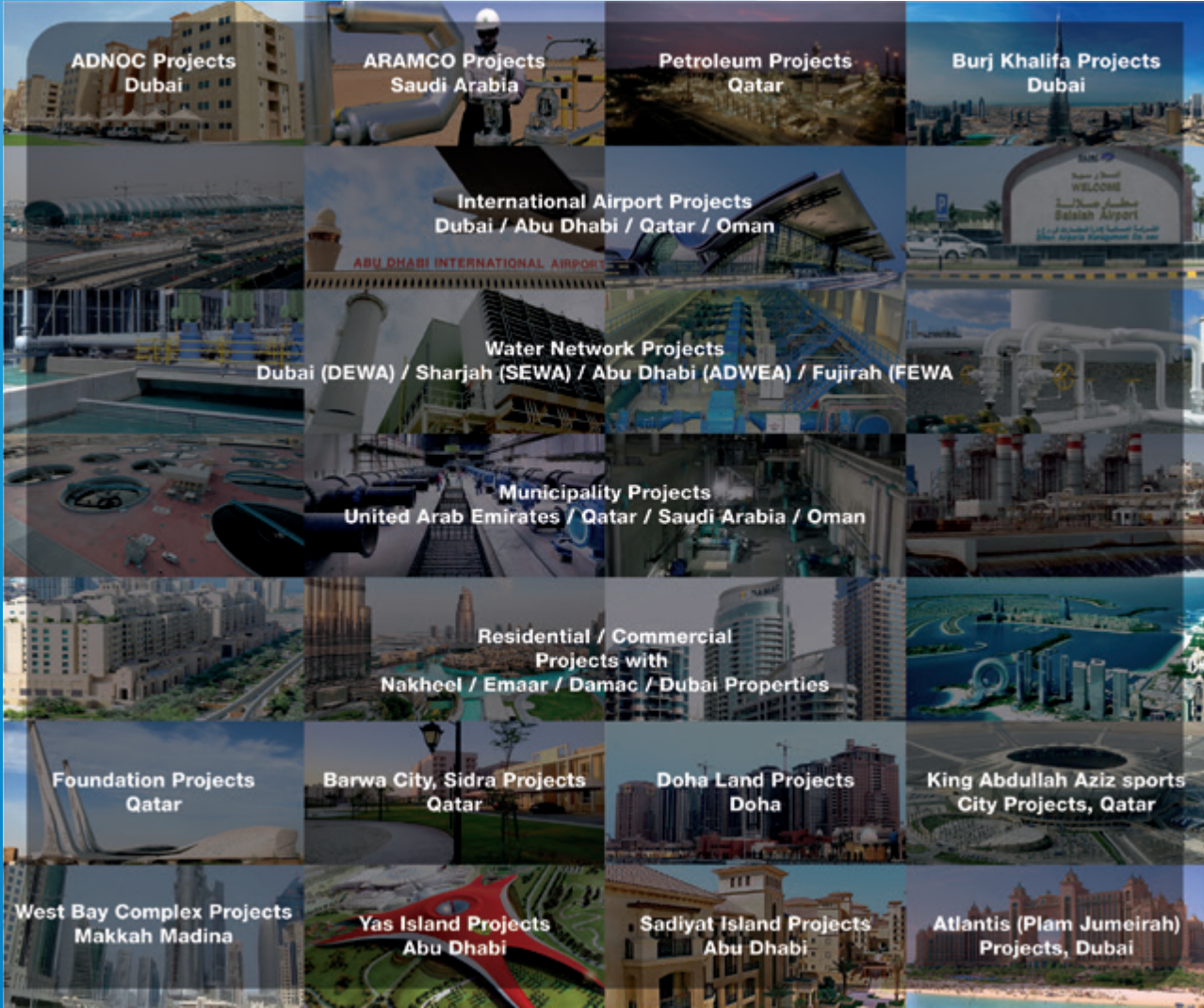
**PIR SWITCH**

## Dust/Odor Controllers



# Our Major Projects

Some of the projects we supplied to!



## Need More Information? Contact Us.

P.O. Box-5428, Sharjah, United Arab Emirates  
Tel. +971 6 5429204, Fax. +971 6 5429209  
Email. [sales@almunasibtrading.ae](mailto:sales@almunasibtrading.ae)



/AMBUAE



/AMBUAE

[www.almunasibtrading.com](http://www.almunasibtrading.com)